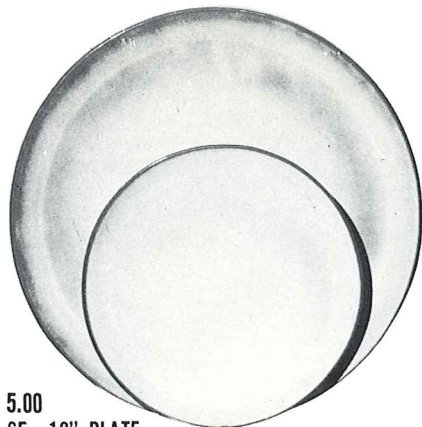


*4K—BUTTER DISH 6.00



5.00
6F—10" PLATE
6G—7" PLATE 3.00



*6B—SUGAR WITH LID 4.50

*6AB—CREAM & SUGAR SET 7.00



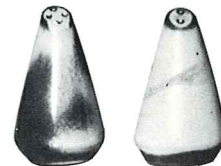
*6A—9 OZ. CREAMER 3.00



*6U—18 OZ. BAKER FOR TWO
A COVERED CANDY DISH 6.00



3.00
* *6C—CUP
6E—5" WELLED SAUCER 2.50



*6H—SALT & PEPPER 4.25



*6VS—1½ QT. BAKER 8.50
6VS/W BAKER & WARMER SET 15.00



*5LC—6 OZ. JUICE 3.00



*5L—12 OZ. TUMBLER 3.50



*81—1 QT. PITCHER 6.00



*244—INDIVIDUAL VEGETABLE BOWL 2.50



*6V—2½ QT. BAKER 12.00
6V/W BAKER & WARMER SET 18.50



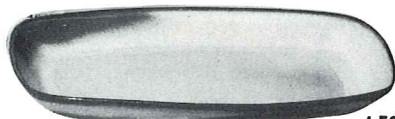
*6T—6 CUP TEAPOT 8.50



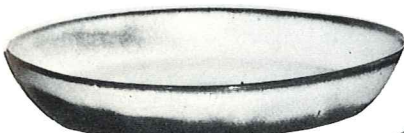
*80—2 QT. PITCHER 8.50



*6J—2 CUP TEAPOT 6.00



4.50
5QS—13" STEAK PLATE (SHALLOW PLATTER)
*6P—11" STEAK PLATE 4.00
*5PS—9" TRAY 3.50



*91—10" BAKING DISH 4.25



*XO—3 OZ. SINGLE SERVING BOWL 1.50



*6S—2 SPOUT GRAVY 6.00



2.50 *242 CORN DISH



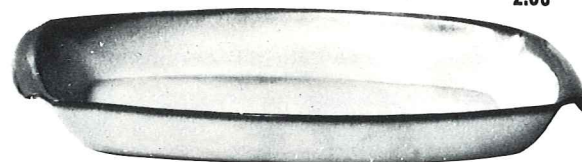
*243—BONE DISH—6½" 2.50



*6N—1 QT. BOWL 4.25

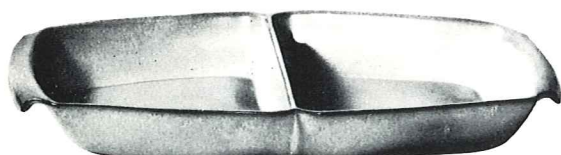


* *6X—14 OZ. CHILI SOUP 3.00
* *6XS—10 OZ. FRUIT 2.50



5P—17" DEEP PLATTER 15.00

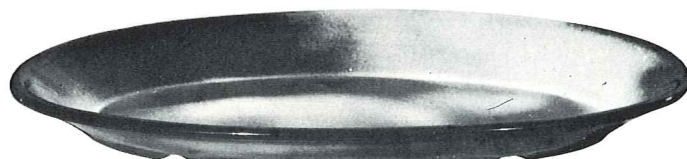
*5Q—13" DEEP PLATTER 7.00



*5QD—13" DIVIDED BOWL 7.00



*BP—6 OZ. BEAN POT OR CUSTARD 2.50



*TP—17" OVAL PLATTER 15.00

THIS PAGE AVAILABLE IN PRAIRIE GREEN, ROBIN EGG BLUE, AUTUMN YELLOW AND WHITE SAND EXCEPT WHERE NOTED

*AVAILABLE IN ALL COLORS **AVAILABLE IN BLACK & FLAME ALSO. — ADD 50% FOR FLAME SIZES ARE APPROXIMATE AND MAY VARY SLIGHTLY. DINNERWARE NOT AVAILABLE IN TERRA COTTA